



www.duxaoil.com



Integral Solutions for the Oil and Gas Industry

Headquartered in Houston, Texas, **Duxaoil Texas LLC** (Duxaoil) is a subsidiary of the **Duralitte Group** in the US, and serves the North America, Central America, and Persian Gulf (Dubai) regions.

As a central hub for distribution and a state-of-the-art machine shop, Duxaoil provides the product lines of its parent manufacturing facilities, **Duralitte Argentina** and **Duralitte Brazil**, enabling customers access to world-class, high-quality products.

Backed by quality certifications, Duxaoil, Duralitte Argentina, and Duralitte Brazil have earned a reputation for producing products of unparalleled quality that are recognized globally.

COMMERCIAL PARTNERS



Frac Plug - Single Slip

FANGIO Silver
LINE Arrow

Product Overview

Our plugs are manufactured to order and designed based upon the characteristics of each well- specifically chloride ion content, temperature, pressure, and working time.

Features

- Large bore ID, 50%-80% larger than conventional.
- Small dissolvable element, 90% smaller than conventional.
- Compact design with anti-presetting feature.
- Shorter length allowed to be run in deformed casing.
- Small in size for quicker dissolution and less debris.

Operation Conditions

- Casing Diameter: 3.5–5.5"
- Temperature: 30–180°C
- Salinity: 100–40,000 ppm
- Acidic environments (corrosion resistance testing required)
- High pressure and temperature conditions
- Static time before fracture: 12–18 hours
- Recommended pumping rate: 1.5–3 m³/min (max. 4 m³/min)
- Dissolution time: Begins after 24 hours
- Compatibility: Compatible with Baker installation tools (no adapter required)



Technical Specifications

Model	5" - 21.4# (101.6-104.8 mm.)	Part N°	FP-5-21,4-95,3-50-120-10ksi
Max OD	3.752" (95.3 mm.)	Min. ID	1.969" (50mm)
Casing	5" - 21.4#	Temperature Rating	248-356 °F (120-180 °C)
Material	Dissolvable Magnesium - Aluminum Alloy	Length	12.48" (317 mm.)
Surface Treatment	Surfaced is treated and coated (optional)	Holding Pressure up to	24 hrs.
Pressure Rate	10,000 Psi	Ball Size	2.5" (63.5 mm.)
Setting Tool	BAKER #10	Number of Teeth	24



FANGIO Silver
LINE Arrow

More Frac Plugs info?

Read QR code or visit:

www.duxaoil.com

Dual-Slip Dissolvable Frac Plug

FANGIO Silver
LINE Arrow

Product Overview

The dual-slip fully dissolvable bridge plug is designed for temporary sealing during staged fracturing of oil and gas wells, and it can rapidly dissolve in well fluids after its use.

Features

- Simple structure and stable performance.
- The body, sealing rubber sleeve, slips, and sealing balls are all dissolvable.
- Saves construction time and effectively reduces the development cost of oil and gas wells.
- Suitable for different well depths, no drilling or grinding is not required after construction.
- Dissolution time can be set according to customer requirements.

Technical Specifications

Casing Size	5 in, 21.4 lb/ft ~ 24.1 lb/ft
Corresponding Casing ID	φ101.6 mm ~ φ104.8 mm
Dissolution Medium	Fresh water or high mineralization medium
Main Body Material	Magnesium alloy
Sealing Material	Dissolvable rubber
Outer Diameter	φ93 mm (3.661 in)
Inner Diameter	φ35 mm (1.378 in)
Overall Length	400 mm (15.75 in)
Dissolvable Ball	φ50 mm (2 in)
Pressure Rating	70 MPa (10,000 psi)
Temperature Rating	150 °C (302 °F)



FANGIO Silver
LINE Arrow

More Frac Plugs info?

Read QR code or visit:

www.duxaoil.com

Ultrashort Dissolvable Frac Plug

FANGIO Silver
LINE Arrow

Product Overview

The ultrashort dissolvable frac plug provides reliable zonal isolation during hydraulic fracturing.

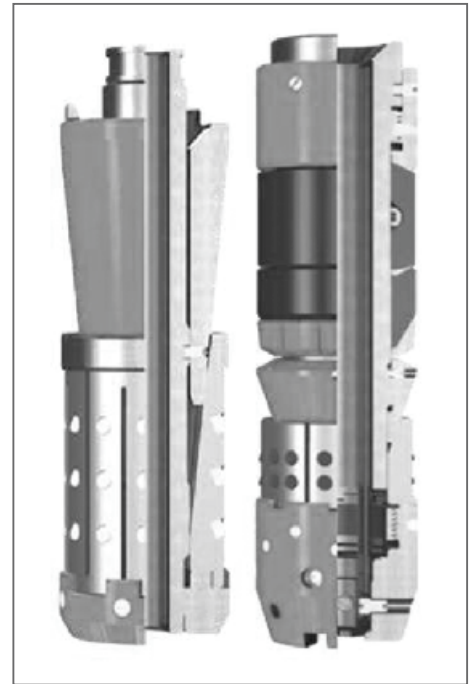
A compact all-metal design puts less material in the well, while the ductile metal sealing technology eliminates leak paths.

Geometric sections are optimized for predictable dissolution, eliminating mill times.

Features

- Full metal seal to ensure no leaks.
- Large bore and short length reduces material.
- Interlocking slip design to resist backflow.
- Predictive Dissolution in both fresh and saltwater.
- Ball Drop or Ball in Place Operation.
- Coating available for high temperature and high salinity environments.

Technical Specifications



Maximum OD	3,740"	95 mm
Minimum OD	1,57"	40 mm
Ball Size	2,00"	50.8 mm
Overall Length	9,37"	238 mm
Temperature Range	248-300 °F	120-150 °C
Pressure Rating for V6-R, V6, V5-R & V5	10.000 Psi	69 Mpa
Setting Tool	Baker #10	

Casing OD	Casing Weight	MAX OD		MIN OD		Temp. Rating	Pressure Rating
5"	21.4 - 24.1 Lbs/ft	3.70"	95.00 mm	1.57"	40.0 mm	86 - 122 °F 122 - 176 °F 176 - 248 °F 248 - 300 °F	10.000 Psi
5 1/2"	17 - 20 Lbs/ft	4.33"	110.00 mm	2.13"	53.9 mm		
	20 - 23 Lbs/ft	4.25"	108.00 mm	2.13"	53.9 mm		
	23 - 26.8 Lbs/ft	4.13"	105.00 mm	2.00"	50.8 mm		
	26.8 - 29.7 Lbs/ft	4.06"	103.00 mm	2.00"	50.8 mm		

Slim Dissolvable Frac Plug

FANGIO Silver
LINE Arrow

Product Overview

Fracture plug made of 100% soluble alloy, designed for completion operations in diameter-restricted wells. Its compact design allows for efficient installation without the need for subsequent recovery, as it dissolves under controlled conditions.

We can supply casing plugs with deformation with 88mm OD, applicable to casing from 5"-21.4mm to 5.5"-23mm and pressure rating of 7250 PSI.



Technical Specifications

Model	5" - 21.4mm SLIM	Part No	FPS-5-21.4-88-50-120-7.25Ksi
Max. OD	3.464" (88mm)	Min. ID	1.969" (50mm)
Casing	5"21.4#	Temperature Rating	248-356°F (120-180°C)
Material	Dissolvable Magnesium-Aluminum alloy	Length	12.48" (317mm)
Surface Treatment	(Optional)	Holding Pressure Up to	24hrs
Pressure Rate	7,250 Psi	Downflow velocity	1.5-3 (m³/min)
Setting Tool	BAKER #10	Ball Size	2.5" (63.5mm)



Read QR code for more info.

Composite Frac Plug

Product Overview

The composite frac plug is run into the wellbore and actuated via hydraulic pressure or mechanical forces. This compresses the slip and cone assembly, forcing the slips outward to bite into the casing wall.

The elastomeric seal element is also compressed to create a tight seal. Differential pressure across the plug further enhances the gripping force and sealing performance.

After fracturing, the plugs are milled out from top to bottom using a rotational milling BHA.

The composite materials quickly disintegrate into small cuttings that can circulate easily out of the hole.

Benefits

- Withstands high pressures and temperatures.
- Strong gripping force without slippage.
- Composite construction mills out rapidly.
- Minimal debris for easy cleanup.
- Enables faster multistage operations.

Features

- Available in 3-1/2", 4", 4-1/2", 5", 5-1/2" & 7"
- Consistent drill times of 5-15 minutes or less.
- The setting sleeve and shear adapter are designed to run on any wireline setting tool or tubing-run hydraulic setting tool, with Baker #10, and Baker #20 connections.
- Can be drilled out using conventional rigid tubing or coiled tubing.



Feature of Composite Material

High strength and stiffness: Composite materials have a very high strength-to-weight ratio and stiffness-to-weight ratio, enabling them to withstand high pressure and temperature.

Corrosion resistance: Composite materials are resistant to corrosion, making them suitable for harsh environments such as oil and gas wells.

Lightweight: Composite materials are lighter than traditional metallic materials, making them easier to transport and install.

Applications

- Plug-and-perf operations in Multistage fracturing in horizontal wells.
- Zonal isolation for production.
- Horizontal, deviated and vertical well bores.
- High pressure/high temperature environments.

Technical Specifications

Casing		Composite Frac Plug				
Size In. (mm)	Weight Range lb/ft (kg/m)	Max O.D. In. (mm)	Min I.D. In. (mm)	Length In. (mm)	Temp. Rating	Pressure Rating
4 1/2" (114.30)	13.5 - 15.1 (20.09 - 22.47)	3.500 (89.00)	1000 (25.4)	19.700 (500.00)	300°F - 150°C	10,000 psi 68,9 MPa
4 1/2" (114.30)	11.6 - 13.5 (17.26 - 20.09)	3.540 (90.00)	1000 (25.4)	20.000 (510.00)		
5" (127.00)	18.0 - 21.4 (26.78 - 31.84)	3.740 (95.00)	1000 (25.4)	21.600 (550.00)		
5 1/2" (139.70)	23.0 - 26.0 (34.22 - 38.69)	4.210 (107.00)	1.300 (33.00)	25.600 (650.00)		
5 1/2" (139.70)	17.00 - 23.00 (25.3 - 34.22)	4.290 (109.00)	1000 (25.4)	25.600 (650.00)		
7" (177.80)	20.0 - 32.0 (29.76 - 47.62)	5.709 (145.00)	1.970 (50.00)	29.527 (750.00)		



Read QR code for more info.

SURICATA™ Plunger Lift Controller

The Next Generation of Plunger Lift Control

Maximize production. Minimize downtime. Built for today's toughest wells.

Smarter Solutions for Artificial Lift

Oil and gas operators face constant challenges: declining well efficiency, liquid loading, high lifting costs, and costly downtime.

SURICATA™ is the answer.

SURICATA™ combines advanced control intelligence with rugged field reliability to deliver a **new standard in plunger lift automation.**

Why SURICATA™?

Unlike conventional controllers, SURICATA™ doesn't just react—it **adapts**. Its intelligent algorithms monitor real-time well conditions, optimizing plunger lift cycles to keep wells flowing smoothly and profitably.

Key Benefits

- **Boosts Efficiency:** Increases gas and liquid production through optimized cycle timing.
- **Minimizes Downtime:** Prevents stalls, slugging, and unnecessary shut-ins.
- **Proven Reliability:** Built to thrive in the most demanding environments.
- **Operator-Friendly:** Simple interface, fast setup, and seamless field deployment.
- **Cost-Effective:** Reduces interventions, extends equipment life, and lowers OPEX.



Features and Benefits:

- **Adaptive Algorithms:** Automatically adjust to changing reservoir conditions.
- **Rugged Construction:** Resistant to high pressure, corrosion, and temperature extremes.
- **Remote Connectivity:** Monitor, diagnose, and control operations from anywhere.

Technology That Works for You

SURICATA™ merges **rugged hardware** with **intelligent software** for unmatched field performance.

- **Plug-and-Play Integration:** Compatible with existing plunger lift infrastructure.
- **Data-Driven Insights:** Provides actionable information to enhance field decisions.

Where SURICATA™ Excels:

SURICATA™ is purpose-built for the challenges that matter most:

- **Horizontal Shale Wells:** Tackles liquid loading in unconventional plays.
- **Mature Gas Fields:** Maximizes recovery while minimizing OPEX.
- **Remote Locations:** Ensures reliability where field access is limited.

Your Competitive Advantage

With **SURICATA™**, you're not just buying a controller, you're investing in production assurance.

Reduce downtime. Increase production. Secure your advantage.

Get in touch

Experience the difference of **SURICATA™**. Contact us today to see how **Duxaoil** can optimize your plunger lift operations.



Read QR code for more info.

Smart Hydraulic Controller - Model "ESD-211"

Ensure Security. Optimize Operations. Reduce Overhead.

Key Features

- **Self-Contained:** Includes battery, charger, regulator, and hydraulic fluid for free.
- **Extensive Data Logging:** Stores 5 years of minute-by-minute data and events for a complete well history.
- **Zero Discharge:** An environmentally friendly design with no hydraulic fluid vented to the atmosphere.
- **SCADA Compatible:** Integrates seamlessly with existing remote systems, adapting automatically to 4-36 VDC commands.
- **SIL2 Approved:** Guarantees security and peace of mind.
- **Dual Pressure Monitoring:** Simultaneously senses and controls flowline and well pressures with independent set points.
- **Smart Automation:** Automatically operates based on user-defined hi-low pressure triggers.
- **Intuitive HMI:** User-friendly 7" touch screen for easy on-site operation, configuration, and data viewing.
- **Fast Response:** Provides a quick closing speed of just 3.3 seconds, protecting people, installations, and the environment.

Applications

- Emergency Shutdown Valves (ESDV)
- Surface Safety Valves (SSV)
- Any single-effect actuator flowline valves

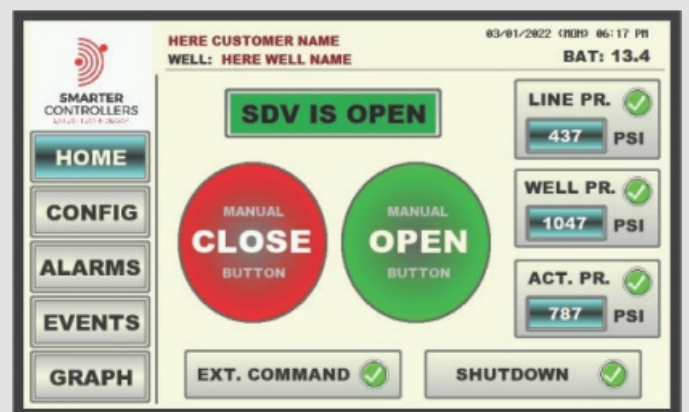
Benefits at a glance

- **Quick Installation:** Under 2 hours.
- **Prevents Washout:** Automatic pressure compensation protects the valve trim.
- **Reduces Downtime:** Avoids production loss from unexpected closures.
- **FREE Data Analysis:** Upload and analyze historical data on a dedicated website.

The **ESD-211** is a state-of-the-art, SIL2-approved Smart Hydraulic Controller.

Designed for critical safety, it provides automatic and remote emergency shutdown capabilities for oil and gas wells.

Its compact, all-in-one design and intuitive touchscreen HMI make it simple to install and operate.



Smart Hydraulic Controller - Model "ESD 211"
Main Screen

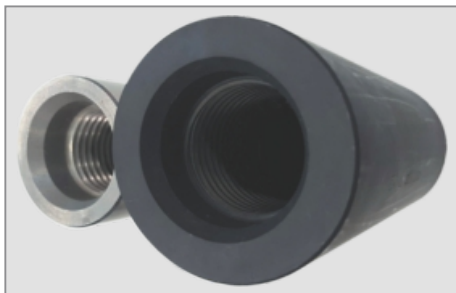
Sucker Rod Couplings

Duxaoil manufactures sucker rod couplings with quality materials under the requirements of API 11B.

The couplings are manufactured in several diameters ranging from 3/4" to 1" and in grades SM and DES according to API 11B.

Duxaoil uses API standard materials, CNC technology and the latest generation toolkit.

Each single product is controlled with certified gauges to assure dimensional attributes.



T class				
size	class	internal finishing	external finishing	weight kg.
3/4"	T	phosphate	phosphate	0.650
7/8"	T	phosphate	phosphate	0.800
1"	T	phosphate	phosphate	0.880

Duxaoil T class couplings are used for services from medium to low requirements.

These couplings are made with tensile strength and fatigue resistance according to API requirements.

The couplings are produced in mills CNC lathes, with special emphasis on the surface finishing of the threads in order to increase the fatigue life by not cutting the fibers of the base material.

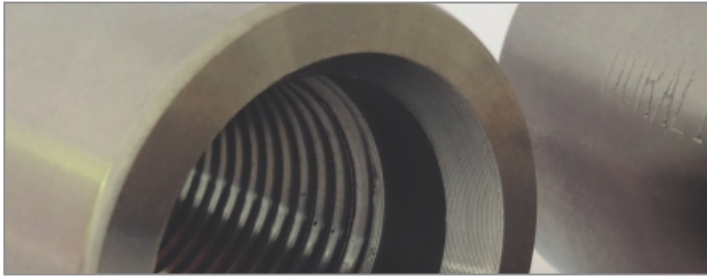
SM class					
size	class	type	internal finishing	external finishing	weight kg.
3/4"	SM	FS	phosphate	spray metal	0.650
7/8"	SM	FS	phosphate	spray metal	0.800
1"	SM	SH	phosphate	spray metal	0.880

The SM coupling was specially developed for highly corrosive environments. The coupling is made with steel of class T, so that it has the same mechanical properties in terms of tensile

SM class has a nickel-chromium outer coating with a minimum thickness of 200 microns, thermally fused to the braked, confers a hardness ranging from 58 to 62 HRC, which increases wear resistance and increases corrosion resistance.

The outer surface is rectified according to API roughness values.

stainless steel sucker rod coupling 330/331 series

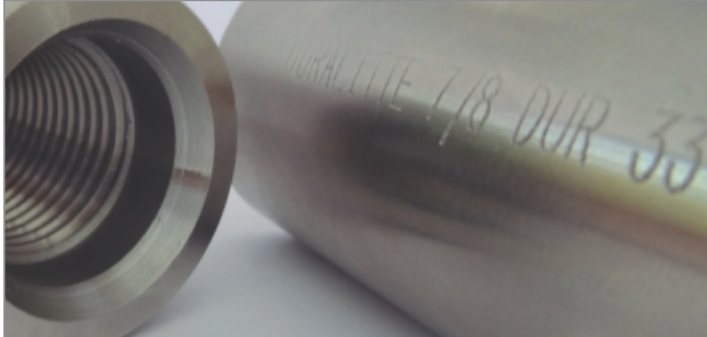


When resistance to stress-corrosion cracking is higher than efficiency of carbon steel couplings, **Duxaoil** developed *Durinox* couplings.

Couplings are manufactured with austenitic stainless steel with high levels of nickel and titanium based on AISI 321 in order to increase resistance to corrosion by chemical agents on parts under tension efforts.

DUR 330 models

product	size	class	type	internal finishing	external finishing	weight kg.
coupling	3/4"	T	DUR 330	phosphate	NA	0.650
coupling	7/8"	T	DUR 330	phosphate	NA	0.800
coupling	1"	T	DUR 330	phosphate	NA	0.880



BB DUR 330 couplings are manufactured in stainless steel reaching tensile strengths values higher than 665 MPa and with a low-hardness (less than 200 Brinell) which decreases the wear of the tubing.

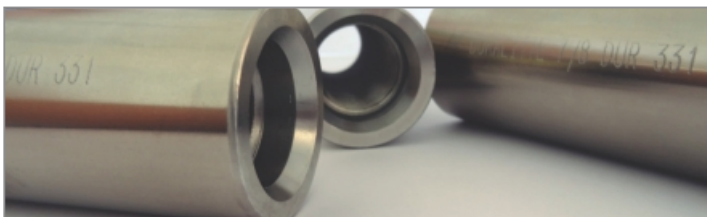
DUR 330 model couplings are recommended for wells under

degree	minimum rupture stress	
	psi	mpa
T	115.000	793

degree	minimum rupture stress	
	psi	mpa
DUR 330	114.000	790

DUR 331 models

product	size	class	type	internal finishing	external finishing	weight kg.
coupling	3/4"	SM	DUR 331	phosphate	rectified	0.650
coupling	7/8"	SM	DUR 331	phosphate	rectified	0.800
coupling	1"	SM	DUR 331	phosphate	rectified	0.880



DUR 331 model couplings offer the same mechanical and constructive characteristics as the DUR 330 model in steel with sprayed metal application.

degree	minimum rupture stress	
	psi	mpa
SM	115.000	793

degree	minimum rupture stress	
	psi	mpa
DUR 331	114.000	790

DES class

product	size	class	type	internal finishing	external finishing	weight kg.
coupling	3/4"	HD	FS	phosphate	phosphate	0.650
	7/8"	HD	FS	phosphate	phosphate	0.800
	1"	HD	SH	phosphate	phosphate	0.880

When the need of resistance exceeds the class T couplings, Duralitte has developed the DES class couplings.

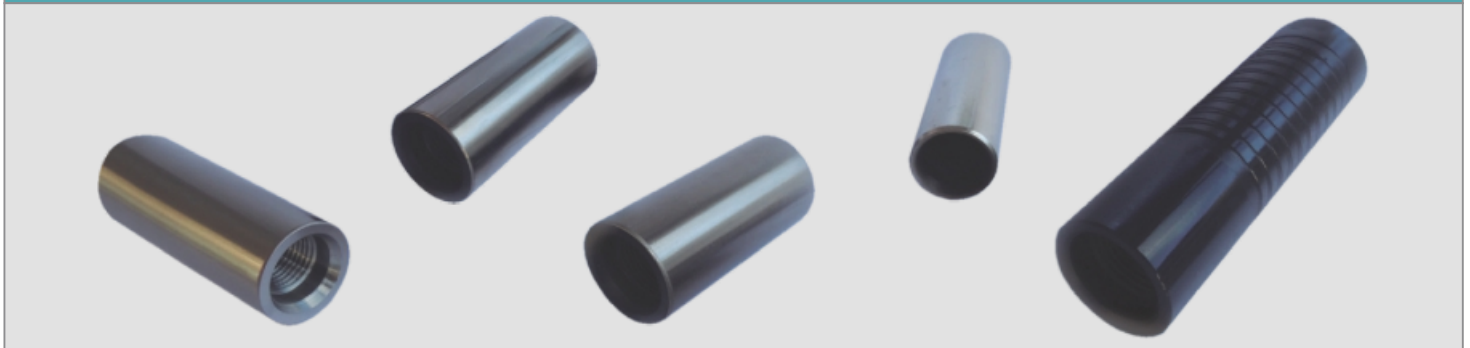
These coupling are made of special steel, to increase the fluence up to values 980 Mpa and to increase fatigue resistance.

These coupling are recommended for deep wells extraction.

polished rod couplings

product	size	class	internal finishing	external finishing	weight kg.
coupling	1 1/4" X 1"	T	phosphate	phosphate	0.570
	1 1/4" X 1"	T	phosphate	phosphate	0.880

sub couplings



product	size	class	type	internal finishing	external finishing	weight kg.
sub coupling	1" x 3/4"	T	SH	phosphate	phosphate	1.15
	1" x 7/8"	T	SH	phosphate	phosphate	1.10
	7/8" x 3/4"	T	FS	phosphate	phosphate	0.83
sub coupling	1" x 3/4"	HD	SH	phosphate	phosphate	1.15
	1" x 7/8"	HD	SH	phosphate	phosphate	1.10
	7/8" x 3/4"	HD	FS	phosphate	phosphate	0.83
sub coupling	1" x 3/4"	SM	SH	phosphate	spray metal	1.15
	1" x 7/8"	SM	SH	phosphate	spray metal	1.10
	7/8" x 3/4"	SM	FS	phosphate	spray metal	0.83

ISO 11960 / API 5CT

size & weight of API coupling

diameter	thread type	size (OD*L) mm	weigh Kg.
2 3/8"	NUE	73.02 x 107.95	1.28
2 3/8"	EUE	77.80 x 123.82	1.55
2 7/8"	NUE	88.90 x 130.18	2.34
2 7/8"	EUE	93.17 x 133.35	2.40
3 1/2"	NUE	107.95 x 142.88	3.71
3 1/2"	EUE	114.30 x 146.05	4.10
4"	NUE	120.65 x 146.05	4.35
4"	EUE	127.00 x 152.40	4.82
4 1/2"	NUE	132.08 x 155.58	4.89
4 1/2"	EUE	141.30 x 158.75	6.05
4 1/2"	STC	127.00 x 128.75	5.23
4 1/2"	LTC	127.00 x 177.08	4.15
4 1/2"	BTC	127.00 x 225.42	4.55
5"	STC	141.30 x 165.10	4.66
5"	LTC	141.30 x 196.85	5.75
5"	BTC	141.30 x 231.78	5.85
5 1/2"	STC	153.67 x 171.45	5.23
5 1/2"	LTC	153.67 x 203.20	6.42
5 1/2"	BTC	153.67 x 234.95	6.36
6 5/8"	STC	187.71 x 184.15	9.12
6 5/8"	LTC	187.71 x 222.25	11.34
6 5/8"	BTC	187.71 x 244.48	11.01
7"	STC	194.46 x 184.15	8.39
7"	LTC	194.46 x 228.60	10.89
7"	BTC	194.46 x 254.00	10.54
7 5/8"	STC	215.90 x 190.50	12.30
7 5/8"	LTC	215.90 x 234.95	15.63
7 5/8"	BTC	215.90 x 263.52	15.82
8 5/8"	STC	244.47 x 196.85	17.15
8 5/8"	LTC	244.47 x 196.85	17.15
8 5/8"	BTC	244.47 x 269.87	20.87
9 5/8"	STC	269.88 x 196.85	18.03
9 5/8"	LTC	269.88 x 266.70	25.45
9 5/8"	BTC	269.88 x 269.88	23.16
10 3/4"	STC	298.49 x 203.20	20.79
10 3/4"	BTC	298.49 x 269.88	25.75
11 3/4"	STC	323.85 x 203.20	22.65
11 3/4"	BTC	323.85 x 269.88	28.05
13 3/8"	STC	365.125 x 203.20	25.68
13 3/8"	BTC	365.125 x 269.88	31.79

Tubing & Casing Couplings

Duxaoil manufactures couplings with seamless steel pipes under API 5CT quality standards.

Couplings are manufactured under requirements of tubing, casing, line pipe with diameters from 2 3/8" to 13 3/8" according to API 5CT standards.

For their production, Duxaoil uses CNC technology and latest generation toolkit. Every single product is controlled with certified gauges to assure dimensional attributes.



couplings

tubing

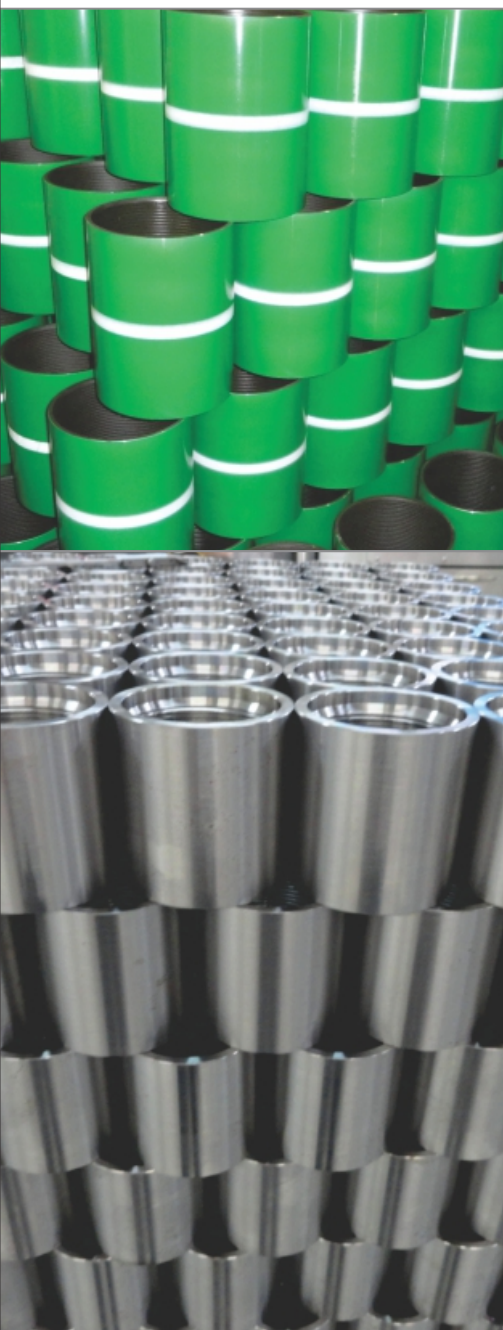
diameter	steel	thread
2 3/8"	J/K55 N/L80 P110	8RD
2 7/8"	J/K55 N/L80 P110	8RD
3 1/2"	J/K55 N/L80 P110	8RD

line pipe

diameter	steel	thread
2"	J55	11,5 HPP
2 1/2"	J55	8 HPP
3"	J55	8 HPP

casing

diameter	steel	thread
5 1/2"	J/K55 N/L80 P110	BTC
7"	J/K55 N/L80 P110	BTC
9 5/8"	J/K55 N/L80 P110	BTC



mechanical properties

API grades	yield strength		tensile strength	hardness
	min PSI	max PSI	min PSI	max HRC
J55	55.000	80.000	75.000	
K55	55.000	80.000	95.000	
N80	80.000	110.000	100.000	
L80	80.000	95.000	95.000	23
L80 9cr	80.000	95.000	95.000	23
L80 13 cr	80.000	95.000	95.000	23
P110	110.000	140.000	125.000	25,4

size for NPT coupling

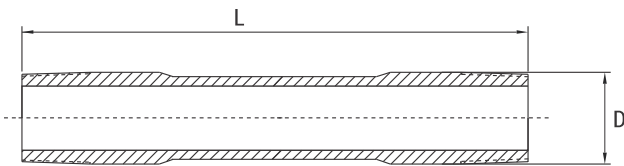
size (inch)	length W (mm)	outside diameter (mm)		thread length (mm)	
		serie 3000	serie 6000	serie 3000	serie 6000
1/4"	35	19	25	8.1	10.2
3/8"	38	22	32	9.1	10.4
1/2"	48	28	38	10.9	13.6
3/4"	51	35	44	12.7	13.9
1"	60	44	57	14.7	17.3
1 1/4"	67	57	64	17.0	18.0
1 1/2"	79	64	76	17.8	18.4
2"	86	76	95	19.0	19.2
2 1/2"	92	92	108	23.6	28.9
3"	108	108	127	25.9	30.5
4"	121	140	159	27.7	33.0

Pup Joints

Duxaoil manufactures pup joint products with seamless steel pipes in J55 and N80 material grades according to API specs 5CT.

EUE pup joints are manufactured in nominal diameters of 2" and 4 1/2" with a variety of lengths ranging from 1 to 12 feet and under API 5CT standards.

For their production, **Duxaoil** uses raw material according to API 5CT standards, using CNC technology and the latest generation of toolkits. Every part is rigorously examined and tested under the most extreme working conditions.



diameter D (inch)	long L (feet)	steel
2 3/8"	2 4 6 8 10 12	J55 / N80
2 7/8"	2 4 6 8 10 12	J55 / N80
3 1/2"	2 4 6 8 10 12	J55 / N80

size for tubing round thread eue

size (inch)	OD (inch)	N° of thread form	effective thread length (inch)	hand position adjustment (inch)	min. length of full thread (inch)
2 3/8"	2.594	8	1.703	2	0.938
2 7/8"	3.094	8	1.890	2	1.125
3 1/2"	3.750	8	2.140	2	1.375

size for tubing round thread nu

size (inch)	OD (inch)	N° of thread form	effective thread length (inch)	hand position adjustment (inch)	min. length of full thread (inch)
2 3/8"	2.375	10	1.456	2	0.725
2 7/8"	2.875	10	1.894	2	1.163
3 1/2"	3.500	10	2.144	2	1.413
4 1/2"	4.500	8	2.328	2	1.563

size

min. (minimum) | opt. (optimum) | max. (maximum)

size (inch/mm.)	nominal weight non upset lb/ft	nominal weight exter. upset lb/ft	grade	recommended torque non upset lb/ft			recommended torque exter. upset lb/ft		
				min	opt	max	min	opt	max
2 3/8" / 60.3 mm	4.60	4.70	J-55	550	730	910	970	1290	1610
	4.60	4.70	N-80	770	1020	1350	1350	1800	2250
2 7/8" / 73.0 mm	6.40	6.50	J-55	790	1050	1310	1240	1650	2060
	6.40	6.50	N-80	1100	1470	1840	1730	2300	2880
3 1/2" - 88.9 mm	9.20	9.30	J-55	1110	148/0	1850	1710	2280	2850
	9.20	9.30	L-80	1520	2030	2540	2270	3030	3790
	9.20	9.30	N-80	1550	2070	2590	2400	3200	4000

Xo Crossovers



Duxaoil manufactures forged adapters and crossovers, utilizing high quality steel. These are built with integral threaded and welded ends. Crossovers for casing in all possible size combinations used in oilfield applications are also produced.

xo crossover size				
size	long W (mm)	OD1 (mm)	OD2 (mm)	grade
5 1/2" x 2"	305	139.7	60.3	J55
5 1/2" x 2 7/8"	305	139.7	78.58	J55
5 1/2" x 3 1/2"	305	139.7	95.25	J55
7" x 2"	305	177.8	60.3	J55
7" x 2 7/8"	305	177.8	78.58	J55
7" x 3 1/2"	305	177.8	95.25	J55
7" x 5 1/2"	305	177.8	139.7	J55
9 5/8" x 5 1/2"	305	244.5	139.7	J55
9 5/8" x 7"	305	244.5	177.8	J55

Blast Joint



The blast joint is used to protect the tubing string against the "gas jet" abrasive effect when positioned in front of the perforations.

Duxaoil blast joint are made of two steel types:

1. Integrally, p110 steel threaded male/female.
2. N80 steel with sprayed metal protection threaded male/male with coupling.

Lengths available in 2,4, 6, 8, 10, 12 and 20 feet.

size of API blast joint			
diameter	size (ODxL) mm	thread type	weight (kg)
2 3/8"	3.063/77.8 x 1.995/50.7	EUE MxF	4.6
2 7/8"	3.662/93.2 x 2.441/62	EUE MxF	6.5
3 1/2"	4.5/114.3 x 2.992/76	EUE MxF	9.3

Customized Machining Solutions

Precision Parts Tailored to Your Need

Duxaoil Texas LLC offers customized machining services tailored to your unique needs. Our state-of-the-art machinery and experienced team of machinists allow us to provide precision machining solutions for a wide range of industries.

From small parts to medium-sized components, we have the capability to create customized parts to your exact specifications. Our team will work with you to understand your needs and requirements, and develop a customized solution that meets your specific needs.



Our range of custom machining capabilities includes but is not limited to:

- **Turning:** We have the ability to turn parts up to 14 inches in diameter and up to 48 inches in length.
- **Drilling and Tapping:** We can drill and tap holes in a wide range of sizes and materials.
- **Threading:** We offer threading capabilities with both single-point threading and cold rolling processes, providing you with a range of options for creating threaded components for the oil and gas.

- **Saw Cutting:** We offer saw-cutting capabilities for different materials, allowing us to create precise cuts for your custom parts.
- **Part Marking:** We can provide laser part marking services to label your parts with part numbers, logos, or other identifying information as needed.
- **Prototyping:** We offer prototyping services to help you develop and test your designs before moving to production. Our team can work with you to refine your designs and create physical sample versions for testing and improvement.

We can provide feedback on design improvements and work with you to ensure that your final product meets your exact needs. We also offer 3D printing capabilities, allowing us to create functional prototypes quickly and efficiently.

Our goal is to provide our customers with high-quality, customized parts that meet their specific needs.

We are committed to providing excellent customer service and delivering projects on time and within budget.

Contact us today to discuss your customized machining needs and to learn more about how our team can help bring your project to life.

International Certifications



API 11B
(Licenses N°11B-0169)



API AX
(Licenses N°11AX-0154)

Introducing Our Dimensional Control and Recertification Lab Precision and Expertise at Your Service



Duxaoil is proud to offer our very own laboratory services dedicated to dimensional control, thread certification, and attribute control equipment.

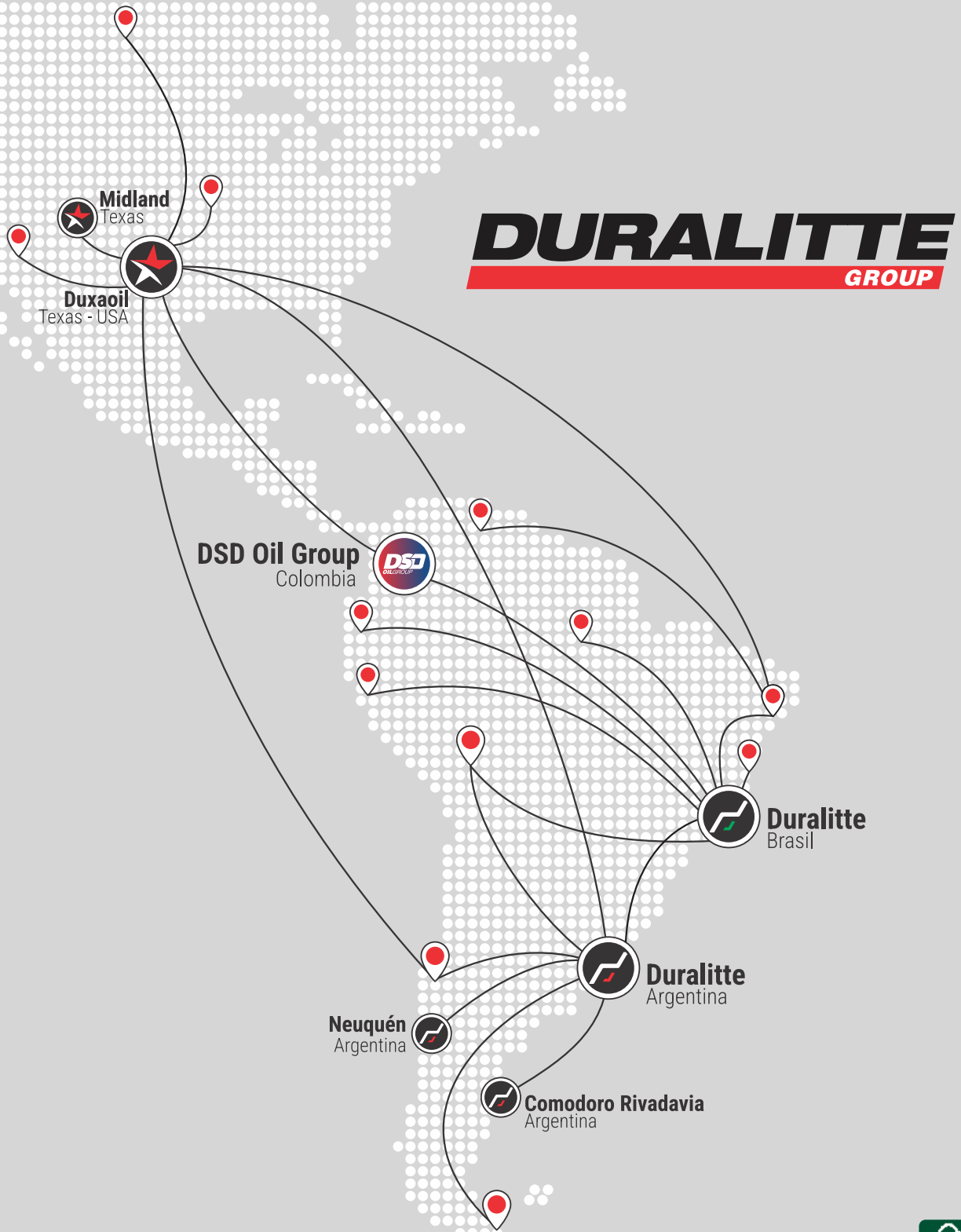
*Our commitment to quality and precision is evident in the use of top-of-the-line **Mitutoyo** and **Gagemaker** equipment, enabling us to provide highly specialized measurements and thread control services for a diverse range of industries:*

- **Oil and Gas**
- **Metallurgical**
- **Nuclear**

*Additionally, we offer a full range of thread gauge rectification services, and as an **authorized distributor for the Southern Cone** of the leading companies **Gagemaker** and **PMC Lonestar**, we are confident in our ability to provide exceptional service and products to our valued customers.*

SUPPORTING COMPANIES







USA HEADQUARTERS
19315 Dickson Park Dr.
Houston - Texas - TX 77373

WAREHOUSE
1920 WW Thorne Dr.
Houston - Texas - TX 77373
Ph.: +1 832.515.5543
www.duxaoil.com



API Certifications
11B - 11AX



[instagram.com/
duxaoiltexas](https://www.instagram.com/duxaoiltexas)



[linkedin.com/
company/duxaoiltexas](https://www.linkedin.com/company/duxaoiltexas)



Youtube Channel
Duralitte S.A.

info@duxaoil.com
www.duxaoil.com

DUXAOIL TEXAS IS MEMBER OF
DURALITTE
GROUP
www.duralittegroup.com



ARGENTINA HEADQUARTERS
Debenedetti 3895
(B1636ENU) Olivos - Buenos Aires
Ph.: +54 11 4005.5540 | 5587
www.duralitte.com

CARDALES PLANT
Parque Ind. Ruta 6
Ruta Prov. 6 Km. 180
(2814) Los Cardales
Buenos Aires

**SERVICE & LOGISTIC
CENTER NEUQUÉN**
Teodoro Planas 4525
(8300) Neuquén



BRAZIL HEADQUARTERS
Av. Doutor Augusto de Toledo 1572
Cep: 09540-080 | Bairro Oswaldo Cruz
São Caetano do Sul | São Paulo | Brasil
www.duralitte.com.br



USA HEADQUARTERS
19315 Dickson Park Dr.
Houston - Texas - TX 77373
www.duxatech.com

WAREHOUSE
1920 WW Thorne Dr.
Houston - Texas - TX 77373
Ph.: +1 832.515.5543